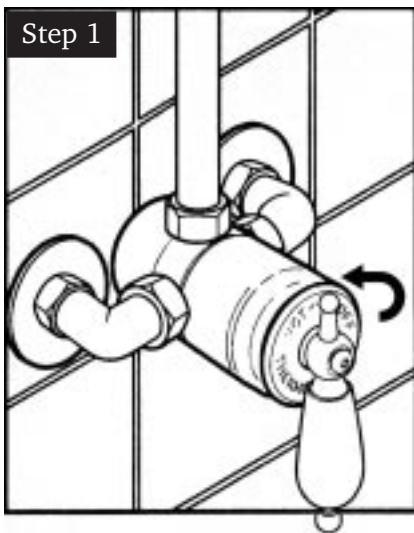


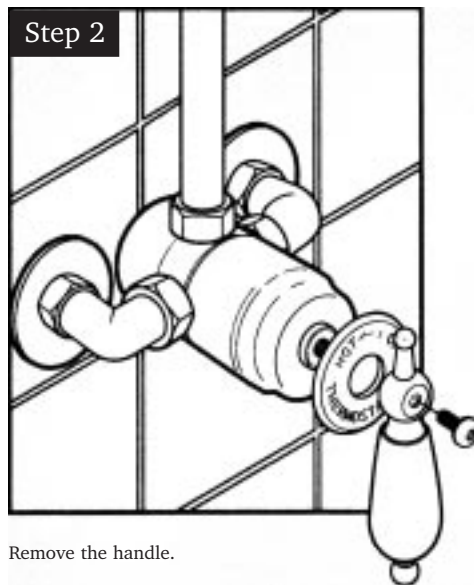
# SEQUENTIAL THERMOSTATIC SHOWER VALVE

## Temperature Calibration

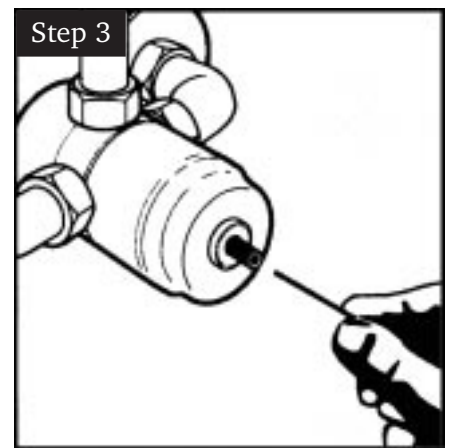
The maximum temperature of the shower valve has been factory pre-set at 43°C, if for any reason you wish to adjust the maximum temperature, please follow these instructions:



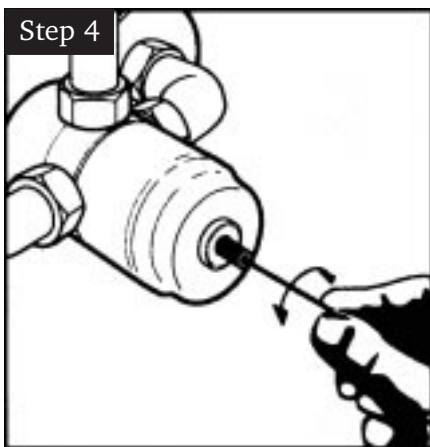
Set the shower to the hottest setting (anticlockwise). Ensure the shower is running.



Remove the handle.



Locate the Allen key down the spindle.



To increase the temperature turn the Allen key  $\frac{1}{4}$  of a turn anticlockwise, leave for 10 seconds to allow temperature to stabilise. Repeat the process if the temperature is not sufficient. Note, the Allen key should not go through more than 2 full turns or 8x  $\frac{1}{4}$  turn increments.



Replace the tap.