

4 TAP HOLE DECKMOUNTED TUB MIXER INSTALLATION INSTRUCTIONS

PRIOR INSTALLATION PLEASE ENSURE THAT THE WATER SUPPLY IS "OFF"

- 1 Plan out (if necessary) the 4 hole positions for the spout, 2 valve side bodies and the escutcheon. But, ensure that the lengths of the 2 flexible connection tubes are taken into account.
Please note: The flexible connection tubes can be gently looped into a circle for fitting purposes. Alternative tubes (not supplied) may be required for remote fitting.
 - 2 Remove breech assembly.
 - 3 Remove the backnut from the spout fixing thread, and fix spout using retaining screw.
 - 4 Fit the spout in the desired position.
 - 5 Hold the spout in position, fit the backnut and fully tighten.
 - 6 Refit the breech to the spout and fully tighten.
 - 8 Ensure the shower hose adaptor/reducer is fitted and fully tightened.
 - 9 Remove the head, collar and flange from the side valves 2 off.
 - 10 Fit the valve in position screw on the flange. Adjust the height of the valve by movement of the flange and finally fully tighten the back nut.
Please note: Ensure that the outlet of the valve is in desired position.
 - 11 Repeat operation 8, with the second valve.
 - 12 Fit the Hot and Cold flexible connection tubes.
Please note: The flexible connection tube can be gently looped into a circle for fitting purposes.
- IMPORTANT - DO NOT KINK THE FLEXIBLE TUBE DURING INSTALLATION**
- 13 Refit the collar and head to the side valves 2 off.
 - 14 Attach the water feeds to the valves.
 - 15 Fit the escutcheon in the required position and secure with the backnut and washer.
 - 16 Locate the shower hose through the escutcheon and fit to the shower hose adaptor attached to the breech lower connection thread.
 - 17 Turn on the water supply and check for water leaks.

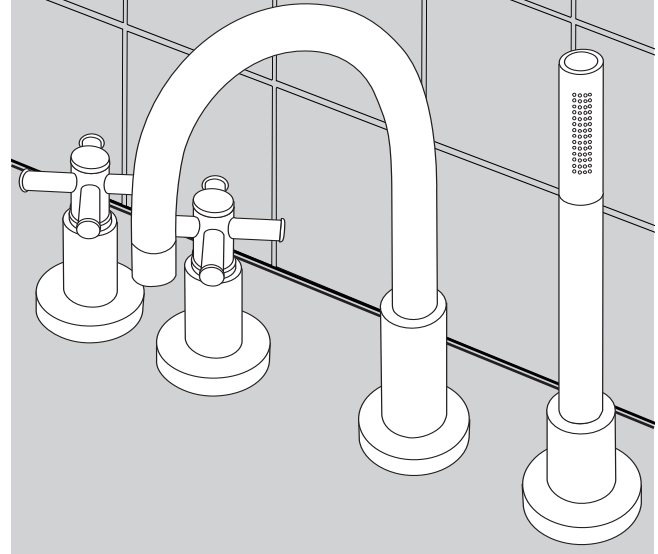
When installing in the state of Massachusetts, a Massachusetts approved pressure balancing valve must be used in conjunction with the hand held shower.

Please Note:

It is essential that water fittings are located so they are readily accessible for maintenance without recourse to removing permanent enclosures or decoration. Always leave good natural access or fit an access panel.

It is recommended that this product is fitted by an approved plumber/installer.

4 TAP HOLE DECKMOUNTED TUB MIXER



INSTALLATION GUIDE

ISSUE 2003

Control handle may vary depending on model supplied

INSTALLATION

4 TAP HOLE DECKMOUNTED TUB MIXER

LIST OF PARTS

Spout Assembly (1 off each)

- Consists:
- Spout
 - Rubber washer
 - Backnut
 - Breech assembly
 - Diverter rod
 - Shower hose adaptor

Side Valve (2 off each)

- Consists:
- Body (with integral water flow reducer in outlet) and valve
 - Head and collar
 - Flange
 - Rubber seal
 - Backnut

Flexible connection tube (2 off)

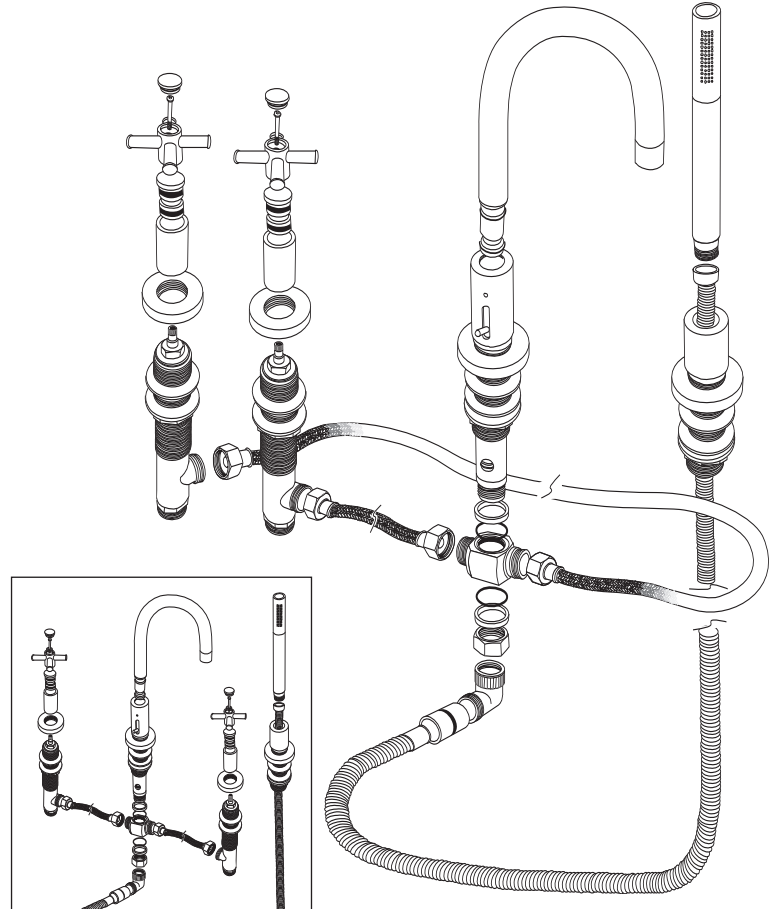
Handset (1 off) - Handset and flow restrictor

Shower hose assembly (1 off each)

- Consists:
- Hose
 - Flow restrictor

Escutcheon (1 off each)

- Consists:
- Body
 - Backnut and washer



*Optional Fixing Layout